

Rehabilitation Map

- Legend**
- Magisterial district: Beaufort West
 - △ Parent farms
 - Farm portions
 - Administrative region: Beaufort West
 - District Municipality - Central Karoo
 - Local Municipality - Beaufort West
 - Ward no - 2
 - Province - Western Cape

Rehabilitation will be undertaken in accordance with DMPR closure objectives and the Mineral and Petroleum Resources Development Act (Act 28 of 2002).

All mining infrastructure, equipment, stockpiles, and waste material will be removed from the site upon cessation of mining - Unless otherwise agreed in writing with the landowner.

Disturbed or compacted areas will be ripped or scarified (minimum ±200 mm) to improve infiltration and support vegetation establishment.

Topsoil, where available, will be replaced to its original depth and stabilised using an indigenous seed mix appropriate to the local biome, where applicable.

No waste material (including scrap, rubble, tyres, or containers) may be buried or burned on site; all waste will be disposed of at licensed facilities.

Surface rehabilitation will focus on landscaping and surface preparation of disturbed areas, limited to stockpiles and previously disturbed ground, and excluding backfilling of excavated areas.

Invasive alien plant species will be managed throughout the life of the operation, with Category 1a and 1b species eradicated in accordance with NEM:BA.

Photographic monitoring will be undertaken at fixed reference points before, during, and after rehabilitation to demonstrate compliance.

Final rehabilitation must be completed within a timeframe specified by the DMPR Regional Manager.

Upon completion of rehabilitation, the permit holder will apply for a Closure Certificate in terms of Section 43(4) of the MPRDA, Regulation 62, and Government Notice R.940 (NEMA).

- Proposed mining area coordinates:**
- A-32.181274°S; 22.828883°E
 - B-32.182551°S; 22.829792°E
 - C-32.183272°S; 22.830329°E
 - D-32.184047°S; 22.831159°E
 - E-32.184626°S; 22.829818°E
 - F-32.183703°S; 22.828935°E
 - G-32.182044°S; 22.827683°E
 - A-32.181274°S; 22.828883°E

- A 32°10'52.586"S; 22°49'43.979"E
- B 32°10'57.184"S; 22°49'47.251"E
- C 32°10'59.779"S; 22°49'49.184"E
- D 32°11'2.569"S; 22°49'52.172"E
- E 32°11'4.654"S; 22°49'47.345"E
- F 32°11'1.331"S; 22°49'44.166"E
- G 32°10'55.358"S; 22°49'39.659"E

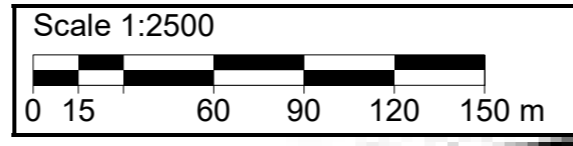
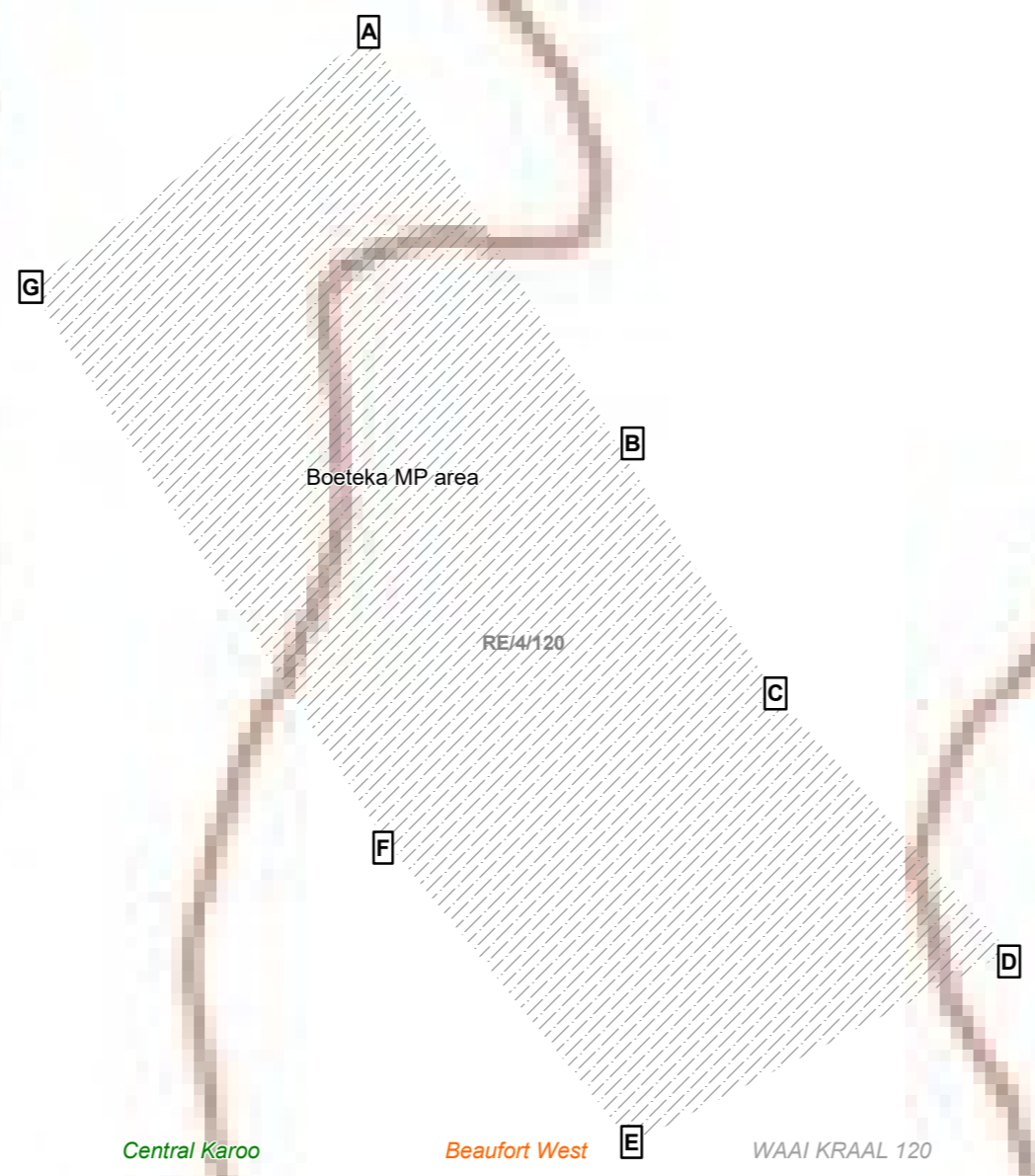
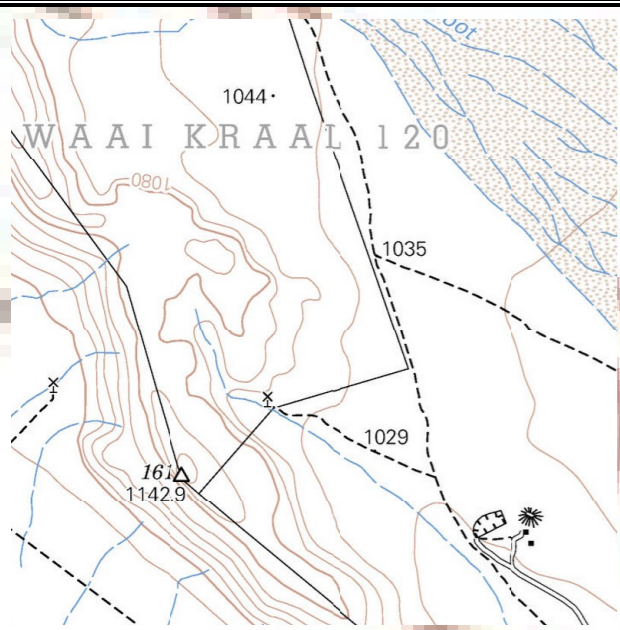
Mining permit application area:
4.9 ha

Client:

Boeteka Doleriet
(Pty) Ltd
2017/316732/07

Consultant:





T3222BB



Please take note that the coordinates were derived from a GIS and not physically surveyed and is therefore an estimation only.